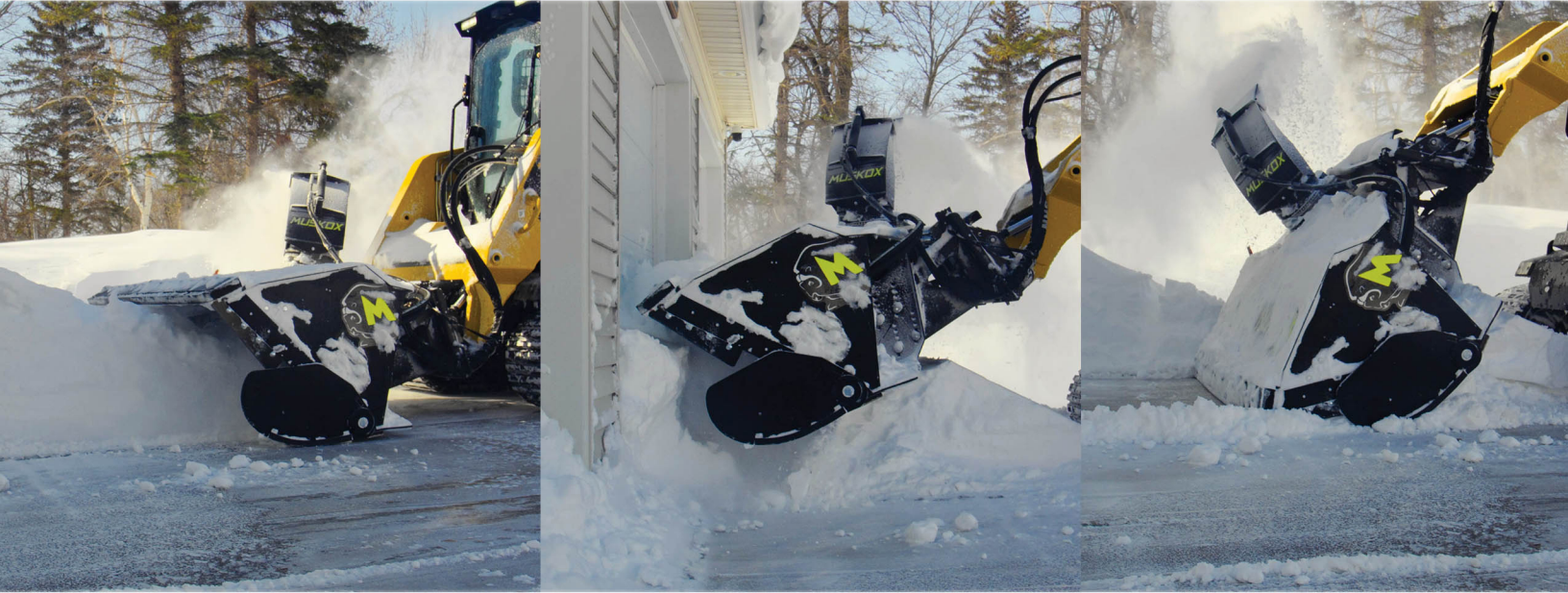


# MUSKOX

SNOWBLOWERS (THAT BACKDRAG)

NOW AVAILABLE IN THREE SIZES: 60", 78" & 90" WIDE



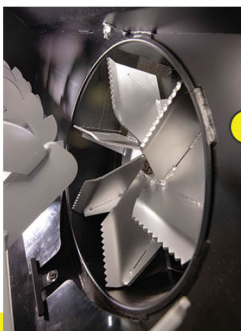
## FEATURES



- 1 LEVELING WHEEL**  
Line up the MUSKOX perfect every time.
- Train new users fast.
  - Run the MUSKOX in the optimal position.

- 3 TOP RUBBER CUT EDGE**  
Rubber Cut Edge engages when backdragging.
- Protects delicate substrates
  - Squeegees away moisture, which requires less salting.

- 4 CHAIN TENSIONER**  
New spring chain tensioning system is easily adjusted from outside the blower.



- 5 SIX BLADED FAN**  
Our six bladed blower fan blows snow more efficiently, allowing you to clear snow faster.

- 6 GLIDE PLATE**  
The design of the large Glide Plate allows the blower to skim over surfaces on UHMW Plastic, protecting softer substrates and lawns.

- 7 LOWER STEEL CUT EDGE**  
Engage the high carbon steel cutting edge only when you need to. This keeps it sharp to tackle that ice and compacted snow.

- 2 LOWERED CHUTE**  
The lower height of the chute gives you excellent visibility and reduces the risk of plugging.

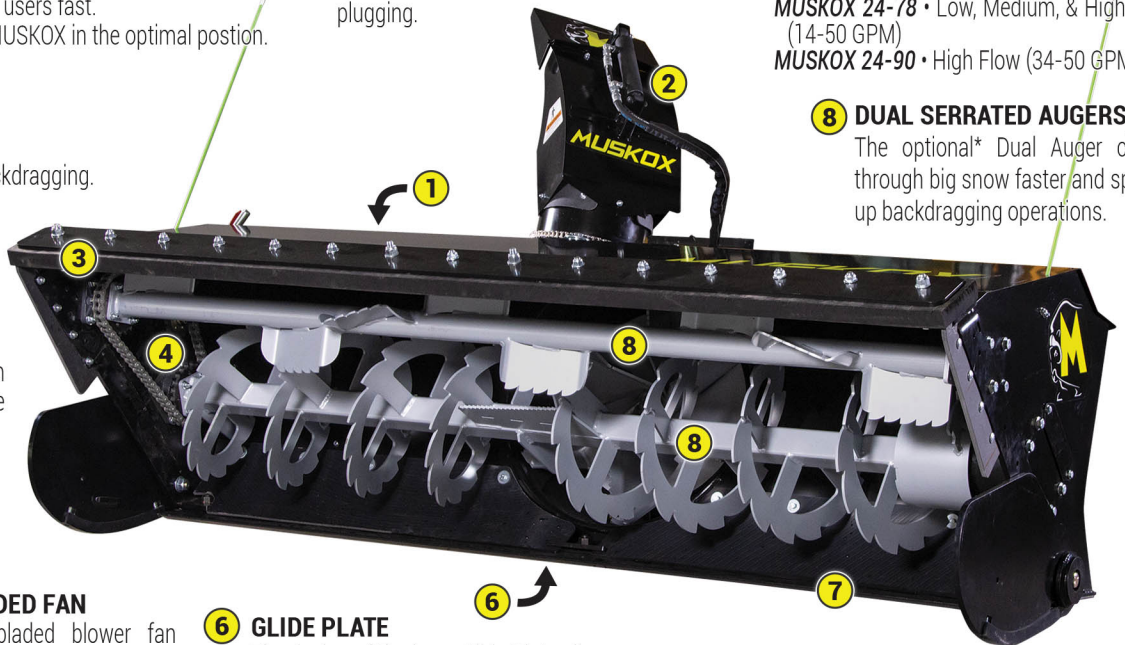
### HYDRAULIC FLOW

**MUSKOX 24-60** • Low, Medium, & High Flow (17-50 GPM)

**MUSKOX 24-78** • Low, Medium, & High Flow (14-50 GPM)

**MUSKOX 24-90** • High Flow (34-50 GPM)

- 8 DUAL SERRATED AUGERS\***  
The optional\* Dual Auger chews through big snow faster and speeds up backdragging operations.





# AVAILABLE IN **FOUR MODELS**

**MUSKOX 25-60**  
**DUALY**  
60" Wide Dual Auger  
\$13,900 (17-50 GPM)

**MUSKOX 25-78**  
**SINGLE**  
78" Wide Single Auger  
\$12,900 (14-50 GPM)

**MUSKOX 25-78**  
**DUALY**  
78" Wide Dual Auger  
\$14,900 (17-50 GPM)

**MUSKOX 25-90**  
**DUALY**  
90" Wide Dual Auger  
\$16,900 (34-50 GPM)



## RUN WITH THE HERD

### BACKDRAG AND BLOW!

The MUSKOX clears snow fast. The blower's unique design allows you to be gentle on soft surfaces like stamped concrete, gravel, and grass while giving you the ability to get aggressive with ice at any time. And our innovative backdrag capability clears snow in front of doors and next to buildings. So you don't waste time shoveling.



### SPECIFICATIONS

| MODEL                                 | 25-60 DUALY             | 25-78 SINGLE            | 25-78 DUALY  | 25-90 DUALY             |
|---------------------------------------|-------------------------|-------------------------|--------------|-------------------------|
| <b>FLOW</b>                           |                         |                         |              |                         |
| Type                                  | Low, Standard, High     | Low, Standard, High     |              | High                    |
| Rate                                  | 17-50 gpm               | 14-50 gpm               | 17-50 gpm    | 34-50 gpm               |
| <b>CUTTING EDGE</b>                   |                         |                         |              |                         |
| Type                                  | Low, Standard, High     | Low, Standard, High     |              | High                    |
| Width                                 | 60"                     | 78"                     |              | 90"                     |
| <b>BLOWER FAN</b>                     |                         |                         |              |                         |
| Diameter                              | 20"                     | 20" - 24"               |              | 24"                     |
| <b>SERRATED AUGER</b>                 |                         |                         |              |                         |
| Top Auger                             | 10" Diameter            | N/A                     | 10" Diameter | 10" Diameter            |
| Bottom Auger                          | 18" Diameter            | 18" Diameter            | 18" Diameter | 18" Diameter            |
| <b>MOTORS</b>                         |                         |                         |              |                         |
| Trice                                 | Auger, Fan, Chute       | Auger, Fan, Chute       |              | Auger, Fan, Chute       |
| <b>APPROXIMATE WEIGHT</b>             |                         |                         |              |                         |
| Landed                                | 1200 lbs                | 1275 lbs                | 1350 lbs     | 1440 lbs                |
| <b>CHUTE &amp; DEFLECTOR CONTROLS</b> |                         |                         |              |                         |
|                                       | Electric over hydraulic | Electric over hydraulic |              | Electric over hydraulic |
| <b>DIMENSIONS</b>                     |                         |                         |              |                         |
|                                       | 61L x 53W x 58H         | 79L x 53W x 58H         |              | 91L x 53W x 58H         |



Scan for more Info!

MUSKOXMN.COM

218-288-1905